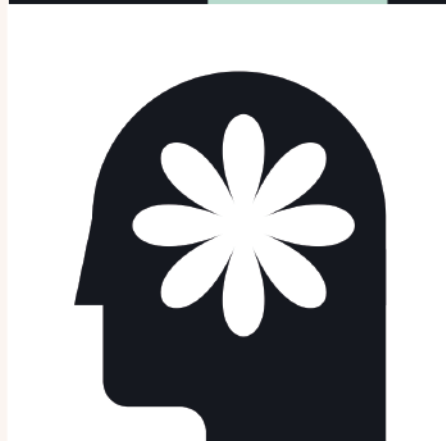




COUNSELLING AND APPLIED PSYCHOLOGY



ABOUT BCAS

The British College of Applied Studies, established in 1999 and popularly known as BCAS Campus, has grown over the years to become one of the leading vocational and tertiary education providers in Sri Lanka. It boasts a comparatively large student population and a panel of well-qualified and experienced lecturers. BCAS Campus has received more than 19 local and international awards since its inception.

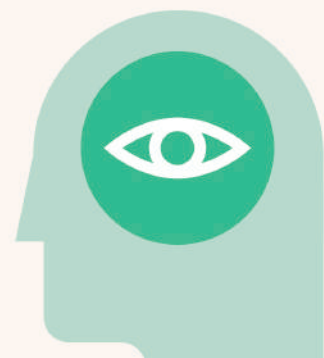
Sri Lankan students can pursue premier UK degrees without leaving the country, as BCAS offers a wide range of highly recognized, industry-related HNDs, undergraduate, and postgraduate degrees in collaboration with reputed British universities. In addition to its fully equipped, modern campus in Colombo (Colombo 03), BCAS operates three regional campuses in Kandy, Jaffna, and Kalmunai. These regional campuses help students from the Central, Northern, and Eastern Provinces save significantly on travel and accommodation expenses.

ABOUT PEARSON

Pearson, formerly known as Edexcel, is the UK's largest qualifications awarding body, with more than 3.4 million students worldwide pursuing qualifications of their choice. Remarkably, over 9 million exam scripts are marked by this organization on behalf of the UK Department for Education each year.

Pearson's evolution to its current status dates back to as early as 1896.

The organization's aim is to advance learners' skills while developing their knowledge. Its qualifications help learners progress either to higher education or directly into employment. These qualifications are grounded in the quality and traditions of the British education system, adapted to meet the needs of today's UK and international learners.



Pearson BTEC Higher National Diploma in Counselling and Applied Psychology- (Cognitive Behavioral).

The Pearson BTEC Higher National Diploma in Counselling and Applied Counselling- (Cognitive Behavioral), awarded by the British School of Applied Studies, is a Pearson-assured Level 5 qualification. This program is designed to prepare students for progression to Level 6 degree-level programs, while offering an opportunity to specialize in a counselling-related field.

The course aims to equip students with the essential skills and attributes needed for roles involving professional responsibility and decision-making, preparing them for successful employment in the field. Throughout the program, students will develop the ability to apply critical thinking to their studies, manage complexity and uncertainty, explore potential solutions, and demonstrate thoughtful evaluations in both theory and practice across a range of therapeutic settings.

Upon completion, students will have a solid understanding of the core principles within the area of specialization, and be able to apply these principles more broadly within the fields of counselling and psychology practice.

Duration : **2 years (Full-time & Part Time)**

Language of Instruction : **English**

Location : **British School of Applied Studies (BCAS), Colombo**

Assured by : **Pearson**



LEARNING OBJECTIVES:

- Meet the training requirements for professional accreditation as a counsellor.
- Have met the Scope of Practice and Education (SCoPEd) framework requirements for a column A therapist. This will facilitate progression to Level 6 study.
- Seamlessly transition from Level 5 to Level 6.
- Be equipped with the attitudes and behaviors required to succeed in counselling practice.
- Have the enhanced employability prospects and 'work readiness' of graduates.
- Have experience enhanced employer engagement.
- Be ready to take part in CPD and lifelong learning for personal and professional development.
- Have experienced a high-quality curriculum that translates theory into a strategic growth mindset.

Learning and Placement Hours

Guided Learning : 960 hours

Independent Learning : 1440 hours

Placement : 170 hours





ENTRY REQUIREMENTS:

ACADEMIC QUALIFICATIONS.

- Local GCE Advanced level of minimum 2 subjects supported by GCE grades A* to S.
- GCE Advanced Level profile that demonstrates strong performance in a relevant subject or adequate performance in more than one GCE subject. This profile is likely to be supported by GCSE grades at A* to C (or equivalent) and/or 9 to 4 (or equivalent) in subjects such as maths and English.
- Other related Level 3 qualifications in relevant subjects such as Pearson Edexcel Level 3 Advanced GCE in Psychology.
- BTEC Level 3 qualification in a related subject, such as BTEC Level 3 Certificate in Counselling Skills.
- A Higher Education Diploma from an approved further education institution in a relevant subject.
- Relevant work experience.
- An international equivalent to the above qualifications.

LANGUAGE REQUIREMENT.

Students will need to demonstrate English language proficiency meeting standards of:

- Completing the final two years of schooling in English.
- Common European Framework of Reference (CEFR) Level B2.
- PTE Academic 51.
- IELTS 5.5 (reading and writing must be at 5.5).

INTAKE INTERVIEW:

An interview will be conducted with students and their guardians to assess whether the student's character aligns with the expectations of the course.

What will be checked:

- The interview will address if the candidates' characters align with qualities expected for an aspiring mental health practitioner.
- Guardians will be interviewed on the candidates conduct, such as absence of any misconduct or violent behaviors.
- Candidates are required to present school leaving certificates to evaluate student conduct.

Please note that if any misleading or false information is provided, the center will not provide the qualification to the student.

PROGRAM STRUCTURE

The program will take place over four semesters for both full-time and part-time. Semester 1 & 2 consist of level 4 units, Semester 3 & 4 consist of level 5 units.

Semester 1.

- Personal and Professional Development Through Inclusive Practice.
- Developing Empathetic Communication for Effective Therapeutic Relationship.
- Self-awareness and Reflective Practice in Counselling.
- Ethical Frameworks in Counselling.

Semester 2.

- Theoretical Perspective in Counselling.
- Individual Differences.
- Digital Approaches in Caring Professions.
- Research Preparation.
- **Placement (100 hours)**

Semester 3.

- Counselling Skills Development and Practice.
- Working with Diverse Clients in Therapeutic Counselling.
- Risk and Assessment (Pearson-set).
- Cognitive Behavioral Approaches to Counselling

Semester 4.

- Counselling Skills Development and Practice.
- Risk and Assessment (Pearson-set).
- Comparative Theories and Approaches in Counselling.
- Psychodynamic Approaches to Counselling.
- **Placement (70 hours)**










PSYCHOLOGICAL PLACEMENTS

- Students will be directed to psychological placements by the university to placement requirements for the program, which is voluntary and not considered as employment (unpaid).
- Students will be eligible to engage in psychological placements only after obtaining a Pass mark for all four semester 1 modules, and passing the placement interview.
- Placement Interview:
 - Each candidate must successfully complete a panel interview arrange by BCAS, consisting of members from both the party BCAS and placement provider.

Credit Scores and Awarding

Total Credits = 240

AWARDING OF HND

-  Completed units equivalent to 120 credits at Level 5.
-  Achieved at least a Pass in 105 credits at Level 5.
-  Completed units equivalent to 120 credits at Level 4.
-  Achieved at least a Pass in 105 credits at Level 4.
-  Completion of at least 170 placement hours.

21,000+
GRADUATES

3,500+
STUDENTS

250+
STAFF

35+
COURSES

19+
INTERNATIONAL
AWARDS

BCAS
CAMPUS
BRITISH COLLEGE OF
APPLIED STUDIES



www.bcas.lk



011 7 999 300

356, Galle Road, Colombo 3 | info@bcas.lk
KANDY | JAFFNA | KALMUNAI